



Infection Prevention and Control Department

## **CPE Screening**

Information for parents and carers

### **Introduction**

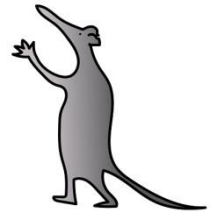
This leaflet aims to inform you about CPE (Carbapenemase producing Enterbacteriaceae) screening, one of the measures being taken at Alder Hey to prevent the spread of the CPE germ.

### **What are CPE (Carbapenemase Producing Enterbacteriaceae)**

Enterbacteriaceae are bacteria that live in the gut. These gut bacteria can spread easily within hospitals and can lead to infections. Sometimes the bacteria develop resistance to commonly given antibiotics. CPE germs are resistant to a group of antibiotics called the Carbapenems which are given for very serious infections.

### **If my child has CPE does this mean they are ill?**

Carrying CPE does not mean that your child is ill. Your child does not pose any risk for other healthy people, including older people, babies or pregnant women.



### **Why is CPE a problem in hospitals?**

During procedures that involve breaking the skin, CPE can get into the body and may cause an infection. CPE can cause urinary tract infections, abdominal infections and blood stream infections.

### **What can be done to control or prevent CPE spreading?**

If we can identify that a child is a CPE carrier before they come into hospital, or on admission screening. We can reduce the risk of the germ spreading by placing the child in a single room and ensuring they receive appropriate antibiotics.

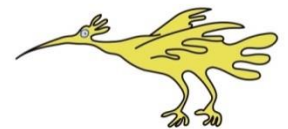
As part of our measures to reduce the rate of CPE infections in Alder Hey, we would like to take a stool sample from your child, or a swab from their rectum, to find out if he/she is a carrier of CPE.

### **What are the benefits of my child being screened?**

Screening will reduce the chance of your child later getting a CPE infection or passing CPE on to another patient.

### **When will screening happen?**

Screening will be done when your child attends their pre-admission clinic or on admission to hospital.



### **Will screening hurt my child and how long will screening take?**

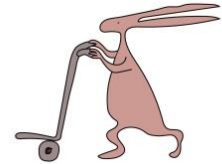
The screening involves swabbing the rectum or collecting a stool sample. This is painless and takes a few seconds.

## What happens to the swab?

The swab will then be tested for CPE in the laboratory.

## When will the results be available?

Results are available within 4-5 days. If your child is no longer in hospital at the time a positive result becomes available, you will be informed by letter from the Infection Prevention & Control team.



This leaflet only gives general information. You must always discuss the individual treatment of your child with the appropriate member of staff. Do not rely on this leaflet alone for information about your child's treatment.

This information can be made available in other languages and formats if requested.

Alder Hey Children's NHS Foundation Trust  
Alder Hey  
Eaton Road  
Liverpool  
L12 2AP

Tel: 0151 228 4811  
[www.alderhey.nhs.uk](http://www.alderhey.nhs.uk)



© Alder Hey

Review Date: February 2021

PIAG: 122

