

This transition leaflet is part of a series produced by the North West Cleft Lip and Palate Network.

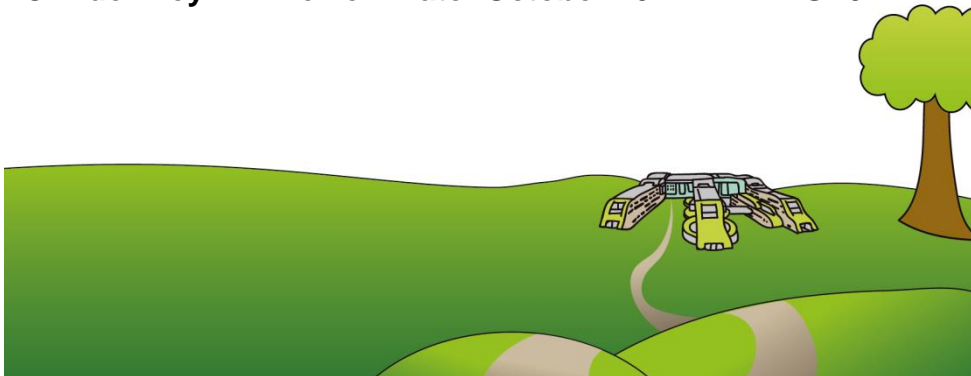


This leaflet only gives general information. You must always discuss your treatment with the appropriate member of staff. Do not rely on this leaflet alone for information about your treatment. This information can be made available in other languages and formats if requested.

Alder Hey Children's NHS Foundation Trust
Eaton Road
Liverpool
L12 2AP

Tel: 0151 228 4811
www.alderhey.nhs.uk

© Alder Hey Review Date: October 2021 PIAG: 072



Cleft Department



Are you starting secondary school this year?

Do you have a cleft lip and/or palate or cleft type speech difficulties?

Why not come along to our **School Change Day**

Every year we invite all young people who are looked after by the North West Cleft Lip and Palate Network and are due to move up to secondary school to our **School Change Day**.

We know that sometimes young people can feel a mixture of excitement and nerves about starting secondary school. It's completely normal to feel a bit nervous, especially if you don't know what to expect at your new school.

School Change Day gives you the opportunity to meet other young people who see the Cleft Team and talk about moving to your new school. We're here to support you with your move and any worries you may have. This can include new subjects and teachers, settling in, making new friends, as well as managing any questions about your cleft or your speech.

Want more information?

Call and ask to speak to the Clinical Psychologist for the Cleft Team.

0151 252 5586 (Liverpool)

0161 701 5683 (Manchester)

What have other families said about **School Change Day**?

