

If you have any questions, you can contact:

Monday-Friday 8:30am to 4:30pm

Advanced Nurse Practitioner in Neurosurgery: **Dawn Hennigan**  
0151 282 4579 or 0151 282 4492

Spasticity Nurse Specialist  
**Chloe Wright / Emma Toni**

Clinical Specialist Physiotherapist  
**Christine Sneade:** 0151 252 5660

Out of hours (evenings and weekends)

**Contact Ward 4A**

0151 282 4492 or 0151 282 4489

Email us with non-urgent queries:  
**spasticityservice@alderhey.nhs.uk**

**IN AN EMERGENCY  
CALL 999**

**DO NOT DELAY EMERGENCY  
TREATMENT IN ORDER TO  
CONTACT THE WARD OR YOUR GP**

This leaflet only gives general information.

You must always discuss the individual treatment of your child with the appropriate member of staff. Do not rely on this leaflet alone for information about your child's treatment.

This information can be made available in other languages and formats if requested.

**Your child has attended today and the following procedures have taken place:**

**Pump refill**

**Drug Dose Change**

New dose:

.....mcg/day

**Drug Concentration Change**

New concentration:

.....mcg/ml

**Your next refill date is:**

.....

This is the date you should attend clinic.

**Your pump alarm date is:**

.....

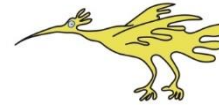
This is the date the pump will alarm if you miss this appointment. This tells you the pump is running low on drug.

**You need to access the ITB team immediately.**

Alder Hey Children's NHS Foundation Trust  
Alder Hey  
Eaton Road  
Liverpool  
L12 2AP

Tel: 0151 228 4811  
www.alderhey.nhs.uk

© Alder Hey  
Review Date: November 2021  
PIAG: 207



**NHS**

**Alder Hey Children's**  
NHS Foundation Trust

## Spasticity Service Intrathecal Baclofen (ITB) Pump Refill



Spasticity \* Tone \* Assessment \* Rehab \* Service

**Information for patients,  
parents and carers**

This leaflet provides you with advice on how to care for your child following refill of your intrathecal baclofen pump.

There should be no adverse effects following today's clinic appointment, however you should always observe your child closely for signs of Baclofen under / over dosage. Some examples are listed below, but please note these are a guide and are not exclusively related to Baclofen.

Should your child's condition or behaviour concern you in any way, please do not hesitate to seek medical advice.

### Signs of under dosage (sometimes called withdrawal)

- Increase in spasticity of the muscles, starting in the lower limbs first
- Itching Skin (Pruritus)
- Seizures - Collapsing or passing out with shaking of arms and/or legs
- Irritable, unusual behaviour such as not knowing who or where they are, saying inappropriate things, getting things mixed up or appearing to see things that aren't there.
- Increased body temperature

### Signs of over dosage

- Excessive weakness of muscles beginning in the lower limbs first
- Sedation and excessive sleepiness
- Nausea and Vomiting
- Dizziness
- **Severe overdose can require Intensive care and ventilation**



The puncture site from the refill should also be observed for any signs of redness, swelling, heat, pain or leak,

**Please ensure that your child's school and carers are aware of the information above**

Please be advised that pumps and catheters can very occasionally malfunction, therefore you should be mindful of this if your child presents with any of the previously mentioned signs and symptoms **at any time.**

If you are unsure, you can contact us on the numbers provided overleaf, or take your child to a medical practitioner for advice without delay.

The pump does contain an alarm. Should you ever hear this alarm, you must contact us immediately.

In the event of this being overnight or at the weekend, take your child to your local hospital, and they will contact our out of hours team for advice. The pump will continue to alarm until it is reset by the programmer.

### **This is a medical emergency**

Medtronic © are the company that have developed and supplied your pump to us.

There is further information available in the Medtronic information booklet you received at the time of pump Implantation titled 'Intrathecal Baclofen Therapy for Cerebral Palsy – Information for you and your family'.

You can also obtain further information from [www.medtronic.com](http://www.medtronic.com) or by contacting Medtronic by telephone 01923 212213

