

How to contact Aintree Hospital:

Hospital Switchboard: 0151 525 5980

Website: www.aintreehospitals.nhs.uk

Postal Address:

Aintree University Hospital NHS Foundation Trust
Longmoor Lane
Liverpool
L9 7AL

This transition leaflet is part of a series produced by the North West Cleft Lip and Palate Network.



Alder Hey Children's NHS Foundation Trust
Eaton Road,
Liverpool.
L12 2AP
Tel: 0151 228 4811
www.alderhey.nhs.uk



Cleft Department



Why am I going to Aintree Hospital?

The Cleft Service at Alder Hey is a lifespan service - meaning you will stay with our team throughout your care. Once you are over 16 any surgery you have will take place at Aintree Hospital. As an adult hospital, it has the right facilities for you now you are older.

Pre-operation (pre-op) appointments at Aintree Hospital

About three weeks before your surgery you will attend a pre-op appointment with your surgeon at Aintree Hospital (this will be the same surgeon you see at Alder Hey). At this appointment you will have your height and weight taken, as well as your blood pressure and a swab for MRSA.

You will also meet a link nurse, who helps to look after our cleft patients whilst they stay at Aintree. The link nurse will be able to show you around the ward and answer any questions you have.

A link nurse will also be on duty during your stay at Aintree Hospital.

Consenting for your surgery

Before you have your surgery at Aintree Hospital you will be asked to sign a consent form. This is our way of being sure that:

- 1) You have been told and understand everything you need to know about the surgery.
- 2) You are happy for the surgery to take place.

Your parents would have done this on your behalf before any surgery you had at Alder Hey Hospital.

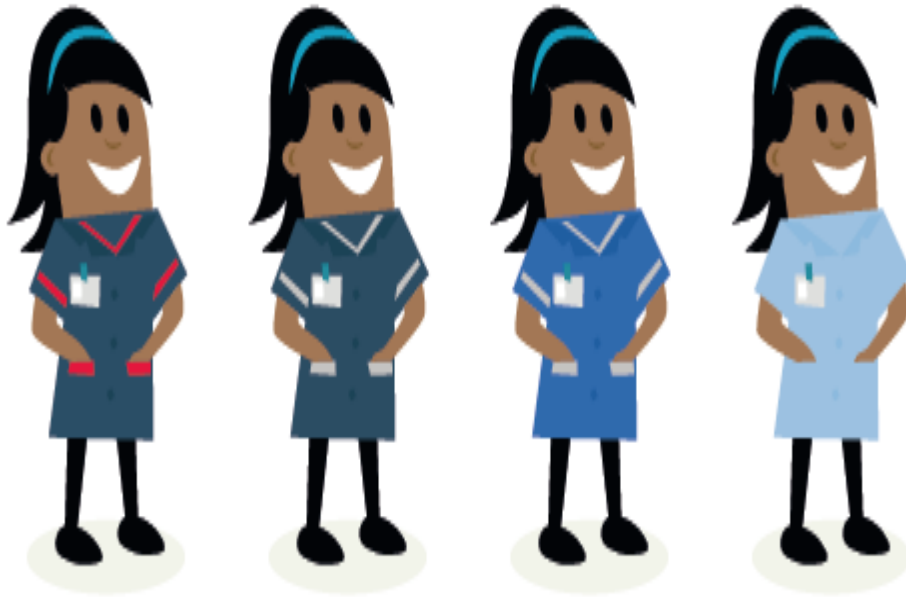
If you have any questions or concerns about your stay on the ward you can speak to the ward staff or a member of the Cleft Team. You can also speak to the link nurse at your pre-op appointment.

Maxillofacial Ward

When you go to Aintree Hospital, you will be staying on the Maxillofacial Ward. Maxillofacial is a medical word meaning anything to do with the head, face, jaw and neck.

The staff on the Maxillofacial Ward

The staff nurses will meet you when you arrive on the ward. They will talk to you and make a plan for your care during your stay. The link nurses are also staff nurses.



Ward manager

Deputy ward
manager

Staff nurse

Care assistant

Other patients on the ward

Some of the other patients on the ward may be in recovery from surgery. Others will have come in via Accident and Emergency.

These patients may have various problems, for example; tonsillitis, ear infections, nose bleeds and fractures of the jaw/cheekbone.

Visiting hours

Aintree Hospital has specific visiting hours.

The visiting hours for the Maxillofacial Ward are:

2:30pm – 4:00pm

and

6:00pm – 7:00pm

Facilities at Aintree Hospital

For information on parking charges please visit:

<http://www.aintreehospitals.nhs.uk/PatientInformation/Pages/Car-Parking.aspx>

Cafes and Shops

There are several places in Aintree Hospital where you can buy food and drinks at various times of the

Internet Access

There is free internet access for all patients staying at Aintree Hospital. All that you need to do is register your details when you connect to the service.

Cash Points

There are two free cash points at Aintree Hospital.

Car-Parking

Aintree Hospital has several car parks including a multi-storey car park, offering 1250 spaces car park is connected to the main hospital by link corridor bridges. The car park also offers several car-parking spaces for Blue Badge holders.

Where can my family stay whilst I'm at Aintree?

There are a number of hotels nearby. Including :

Aintree Lodge Hotel

University Hospital Aintree
Lower Lane,
Liverpool L9 7AL
Tel: 0151 529 5100

Premier Inn Aintree

1 Ormskirk Road,
Liverpool L9 5AS
Tel: 0871 527 8612

Travelodge Stonedale Park

East Lancashire Road,
Liverpool L11 9DH
Tel: 0871 984 6437

The hotels listed above are for information purposes only Alder Hey Children's NHS Foundation Trust is neither liable for any these hotel services, nor does it endorse any of these businesses.