

Where to find us

Advisory Clinics	Days and times	Children's centre contact details
Clubmoor Children's Centre	Every LAST WEDNESDAY of the month 8.30am-10:30am	Utting Avenue East, Liverpool L11 1DQ 0151 233 8500
Childwall Children's Centre	Every FIRST TUESDAY of the month 9-11am	Rudston Primary School, Rudston Road, Liverpool L16 4PQ 0151 233 5733
Dingle Lane Children's Centre	Every FIRST FRIDAY of the month 9:30-11:00am	164 Dingle Lane, Liverpool L8 9UB 0151 233 4930
Speke Children's Centre	Every LAST FRIDAY of the month 9-11am	Conleach Road, Speke, Liverpool L24 0TW 0151 486 9719
Stoneycroft Children's Centre	Every LAST TUESDAY of the month 9-11am	38 Scotia Road, Liverpool L13 6QJ 0151 233 4770

Raising Concerns

For advice, support or to raise a concern, contact our Patient Advice and Liaison Service (PALS).

Telephone: 0151 252 5161 (PALS)

Email: PALS@alderhey.nhs.uk

Language and Accessible Support

This information can be made available in other languages and formats if requested.

This leaflet only gives general information. You must always discuss the individual treatment of your child with the appropriate member of staff. Do not rely on this leaflet alone for information about your child's treatment.

Alder Hey Children's NHS Foundation Trust
Eaton Road
Liverpool
L12 2AP

Tel: 0151 228 4811

© Alder Hey

Review Date: January 2022

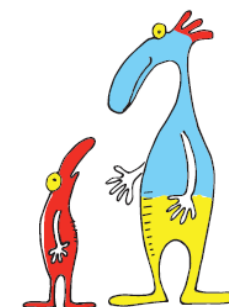
PIAG: 253



Alder Hey Children's
NHS Foundation Trust

Liverpool Community
Physiotherapy Service

0-5 Advisory Service Information

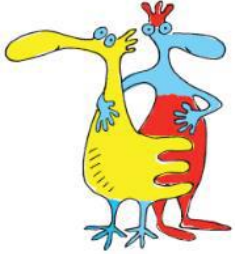


Information for Service Users
and Families



Who are we?

We are a team of community based health professionals who are experts in movement and child development.



What is an advisory clinic?

A drop-in session at a local children's centre for advice only.

What will happen at an advisory clinic?

We offer a face-to-face discussion with an early years physiotherapist for concerns about your child's early physical skill development.

We offer a brief assessment and advice for pre-school aged children.

*Please be aware you may be asked to wait to see a physiotherapist and you will be seen in order of the time you arrive.

Who do we see?

The 0-5 community physiotherapy team are able to provide an opportunity for you to discuss any concerns you may have about your child's early physical skills development.

A formal referral is not required for this service and you are welcome to drop-in for advice.

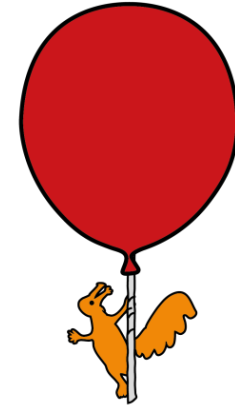
We are only able to offer advice to children and families with a Liverpool GP.

Who do we NOT see?

We do not see children in this clinic who have a known neurodevelopmental or existing diagnosis.

We do not see children with concerns about hip development – please contact your health visitor or GP directly.

We do not see children or young people with musculoskeletal conditions including back ache, recent fractures / sprains, talipes or knee pain.



What do I need to do?

You can drop-in to a scheduled advisory session or speak to your health visitor for more information - please bring your child's red book with you.

We recommend you contact the children's centre prior to attending the advisory session to ensure the clinic is running.

Contact Us

Community Physiotherapy Service
Alder Hey Children's NHS Foundation
Trust

1st Floor
Kilby House
Liverpool Innovation Park
L7 9NJ

Tel: 0151 438 2090
www.alderhey.nhs.uk