



**Craniofacial Team**

# Aintree University Hospital Craniofacial Service

## **Aintree Hospital Address:**

Aintree University Hospital NHS Foundation Trust  
Aintree University Hospital, Longmoor Lane, Liverpool L9 7AL

**Main Hospital Switchboard:** 0151 525 5980

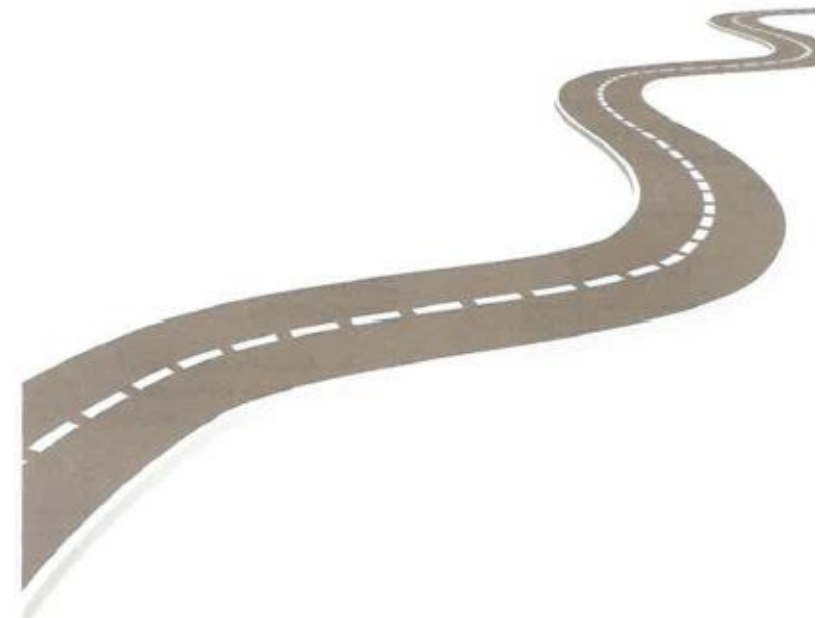
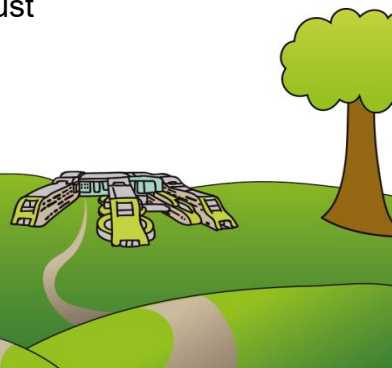
**Aintree Hospital Website:** [www.aintreehospitals.nhs.uk](http://www.aintreehospitals.nhs.uk)

This information can be made available in other languages and formats if requested.

Alder Hey Children's NHS Foundation Trust  
Eaton Road, Liverpool L12 2AP

Tel: 0151 228 4811  
[www.alderhey.nhs.uk](http://www.alderhey.nhs.uk)

© Alder Hey  
Review Date: July 2024  
PIAG: 083



**Information for patients**

## Aintree University Hospital

The team will now refer you over to Aintree Hospital where you will have any further appointments or procedures you may require.

Alder Hey Children's Hospital  Aintree University Hospital

### Pre-op Appointments:

You will attend a pre-op appointment with your surgeon (the same surgeon you see at Alder Hey) around 3 weeks before your surgery. This appointment will consist of taking your height, weight, blood pressure and a swab for MRSA.

You will also meet a link nurse, who will look after you during your stay at Aintree. This link nurse will be able to show you around the ward and answer any questions you may have.

### Consenting for your surgery:

Before you have surgery at Aintree you will be asked to sign a consent form. Your parents would have done this on your behalf before any surgery you had at Alder Hey. A consent form is to ensure that:

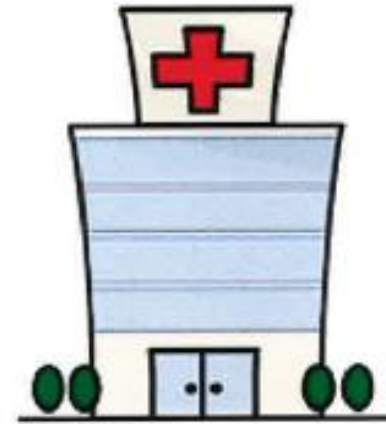
- You have been told everything you need to know about your surgery.
- You are happy for the surgery to take place.

### Where can my family stay whilst I'm at Aintree?

There are several hotels nearby if you want your family to stay nearby during your visit.

These include:

- Aintree Lodge Hotel
- Premier Inn Aintree
- Travelodge Stonedale Park



### Maxillofacial Ward

The Maxillofacial ward is where you will be staying during your visit to Aintree Hospital: A medical word meaning anything to do with the head, face, jaw and neck.

### Staff on the Maxillofacial Ward:

When you arrive on the ward, you will be met by staff nurses who will plan for your care during your stay.

The ward staff and Cleft Team are available to talk if you have any worries or concerns about your stay on the ward. There will be a link nurse at your pre-op appointment, who you can also speak to.

### Other patients on the ward:

There may be patients who are recovering from surgery. Others may have come via Accident & Emergency, with problems including tonsillitis, ear infections, nose bleeds and fractures of the jaw/cheekbone.

### Visiting Hours:

The specific visiting hours for the Maxillofacial Ward are:

- 2.30pm-4.00pm
- 6.00pm-7.00pm

### Facilities at Aintree

#### Aintree Lodge entrance:

- Main hospital dining room serving hot and cold food (Monday-Friday 9:30am-

#### Main Hospital entrance:

- Starbucks (Monday-Friday 7:00am-8:00pm and Saturday 9:00am-8:00pm).

